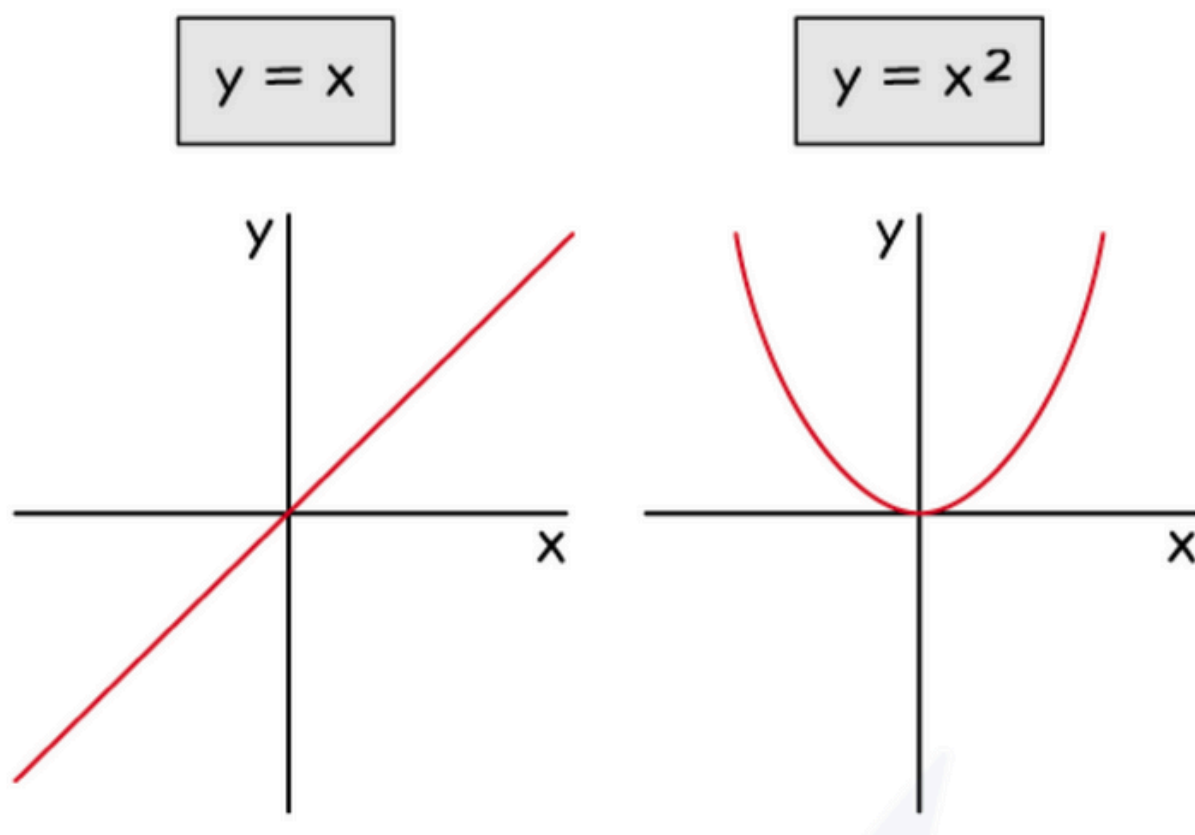


Linear vs Quadratic Graph Examples

Graphs show how numbers change in relation to one another - and linear and quadratic graphs do this in very different ways.

A linear graph is a straight line. It shows a constant rate of change - the same increase or decrease every step.

A quadratic graph is a curved shape called a parabola, which shows a changing rate of growth or decline.



More Resources Available At:
mathsfor.fun/resources